

Select location

Search



Sign In | Register

EDGEMEDIANETWORK
[News](#) [A&E](#) [Biz](#) [Tech](#) [Money](#) [Cars](#) [Style](#) [Health](#) [Travel](#) [Nightlife](#) [Pride](#) [Calendar](#)

Entertainment » Movies

New Lego Set 'Women of NASA' To Be Released

by Winnie McCroy
EDGE Editor
Tuesday Mar 28, 2017

[PRINT](#) [EMAIL](#) [COMMENTS \(0\)](#)


If you're looking for ways to inspire your kids to reach for the stars, LEGO is there to help you with a new play set featuring the badass astronauts and scientists who made NASA what it is today.

Mashable reports that the set, called Women of NASA, was created by science communicator Maia Weinstock and honors five accomplished women from NASA history. Lego **announced** that it has approved the set for release, but that it is still "working out the final product design, pricing and availability for the Women of NASA set, so check back on LEGO ideas in late 2017 or early 2018 for more details."

"Women have played critical roles throughout the history of the U.S. space program," Weinstock wrote in a description of the set. "Yet in many cases, their contributions are unknown or under-appreciated, especially as women have historically struggled to gain acceptance in the fields of science, technology, engineering, and mathematics."

The newly-approved set aims to help correct this by honoring some of the amazing women of NASA who haven't always gotten their proper due. The set started off as a proposal on LEGO Ideas, a community page where fans can submit their own suggestions for sets that the company should make in the future. Weinstock's idea went live in July 2016 and by August it reached the 10,000 supporters needed for Lego's consideration.



(Source:Maia Weinstock)

The set currently features Sally Ride, the first American woman in space; Mae Jemison, the first African-American woman in space; Katherine Johnson, a scientist and mathematician immortalized in the movie "Hidden Figures," who helped create the math that got astronauts to the moon during the Apollo program; Margaret Hamilton, a NASA scientist who developed software for the Apollo program; and Nancy Grace Roman, a NASA astronomer known for her work with the Hubble Space Telescope.

The unofficial art for the set shows the five pioneers in various settings modeled after their real-life NASA accomplishments, with Ride and Jemison shown standing next to a LEGO version of NASA's space shuttle, the vehicle that took both of them to

outer space.

The company said that while the look and feel of the set isn't yet finalized, LEGO will work with Weinstock's original vision in the next few months to make it a reality and bring it to the shelves by late 2017 or early 2018.

Related Stories



A LEGO® Brickumentary

MOVIES | By JC Alvarez | Nov 9

For anyone who has ever pushed the limits of his imagination and wanted to keep going "A LEGO®

Brickumentary" is exactly that type of film to inspire you to lay down the foundation for an entirely new world. Great fun and nostalgic!

Legoland Becomes First Brick in Dubai's Southern Expansion

By Jon Gambrell | Nov 1

In four years Dubai's rulers envision 25 million people coming to the area as part of the 2020 World Expo, or world's fair.

'Lego Batman' Dominates 'Fifty Shades Darker' At Box Office

MOVIES | By Lindsey Bahr | Feb 12

Moviegoers could choose violence, sex or family-friendly fare this weekend with three diverse new offerings that all drew healthy numbers at the North American box office.

Win Free Stuff!



CHIPS on Blu-ray!

Second 2016 Review Results - LEGO Ideas


PopUps: Watch a Shirtless Bieber Win an Arm Wrestling Match

If you need a break from the workday, take a look at this video from Justin Bieber's Instagram posted over the weekend.

[More»](#)

Winnie McCroy is the Women on the EDGE Editor, HIV/Health Editor, and Assistant Entertainment Editor for EDGE Media Network, handling all women's news, HIV health stories and theater reviews throughout the U.S. She has contributed to other publications, including The Village Voice, Gay City News, Chelsea Now and The Advocate, and lives in Brooklyn, New York.

Comments

[Add New Comment](#)

Comments on Facebook

0 Comments

Sort by **Oldest**

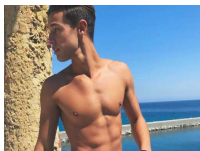
Add a comment...

[Facebook Comments Plugin](#)

INSIDE EDGE



Drunk Driving is Still the Biggest Killer on Our Roads



PopUps: Internet Celeb Cameron Dallas Wears Nothing but a Towel for Photo Series



Is Marriage Equality a Boon for the Housing Market?



They're Shipping In: Boston Hosts More Than 50 Tall Ships



Anti-LGBT 'Christian' Group's Facebook Page Gets Punked by Rainbow Flags



Alice Austen House Designated National Site of LGBTQ History

- Atlanta, GA
- Atlantic City, NJ
- Austin, TX
- Baltimore, MD
- Boston, MA
- Buffalo, NY
- Charlotte, NC
- Chicago, IL
- Cleveland, OH
- Columbus, OH
- Dallas, TX
- Denver, CO
- Detroit, MI
- Ft. Lauderdale, FL
- Fire Island, NY
- Indianapolis, IN
- Key West, FL
- Las Vegas, NV
- Los Angeles, CA
- Miami, FL
- Minneapolis-St. Paul, MN
- Nashville, TN
- New Orleans, LA
- New York, NY
- Orlando, FL
- Palm Springs, CA
- Philadelphia, PA
- Phoenix, AZ
- Pittsburgh, PA
- Portland, OR
- Providence, RI
- Provincetown, MA
- San Diego, CA
- San Francisco, CA
- Seattle, WA
- Washington, DC

Network Partners

- Bay Area Reporter
- Bay Windows
- Bear World Magazine
- Damron LGBT Travel
- HotSpots! Magazine
- QNotes
- Rage Monthly
- South Florida Gay News
- Uomo Moderno

Things to do

- Get Newsletters
- Learn about EDGE
- Work here
- Visit our Press Room
- Advertise
- Write Feedback
- Read Privacy Statement
- Read Terms of Use
- Contact Us

Email Updates

Enter your email address below to receive daily email updates including news, giveaways and more.



Copyright © 2003-2017

EDGE Publications, Inc. / All Rights Reserved

Homotech, YouShoot, EDGE Media Network, Pride Labs and QueeryMe are registered trademarks of EDGE Publications Inc.

98.14.235.74